

# YORKSHIRE MUGS A SMALL COLLECTION

The late Christopher Peal wrote in his book *Pewter of Great Britain* "Dating probably from c.1790 is a rare type from Yorkshire. This is a truncated cone with a very broad band or fillet round the drum amidships (on the quarts and pints only, not on the half pints). The only six I have seen are verified to the Ridings, and none bears a maker's mark. This is a most attractive style, with an 'early' look. Even more than the broad band and very simple base mouldings, the handle is most distinctive, being 'cranked' (hump topped like a bent thumb), with prominent thumb rest, bold curve to the handle and a particularly long, curved end beyond the attachment, ending in an approximation of a horse's hoof terminal".

As per Christopher's findings none of these mugs have a maker's mark. They are a little battered, but this adds to their charm.

## Two Half Pints



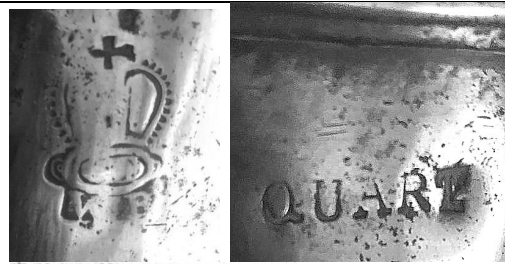
QUART 1



QUART 2



V Crown R over 157 for Winchester City

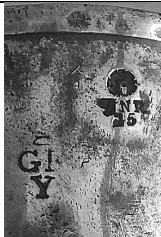


V Crown R over 130 for Banff Royal Borough

PINT 1



PINT 2



Crowned GR over Y for Yorkshire  
County



Richmond Borough Mark

Pint 3



Pint 4



Pint 5



York Pint+ - likely John Harrison - 28 fluid oz Crowned X remains of 4 hallmarks - typical York handle interesting, raised base - RARE

Pint 6



Perhaps OEAS and the 17th century pint of c17.7 fl oz. 516 ml capacity Perhaps John Harrison



Pint 7



Perhaps OEAS and the 17th century pint of c17.7 fl oz. 535 ml capacity



Half Pint 3



York or Leeds made c 1770 West Riding division 15

