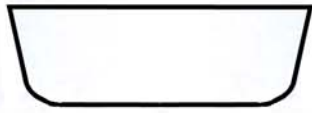


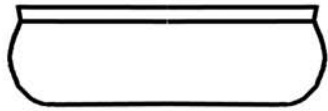
BOWL SIDES



Straight



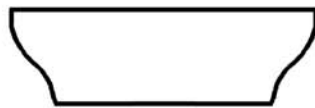
Straight with rim flange



Bellied

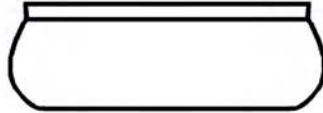


Curved

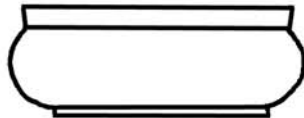


Ogee

BOWL BASES



Flat



Flat with foot rim



Bossed



Domed

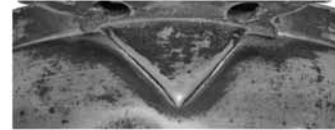


Domed with foot rim

BRACKETS



Wedge



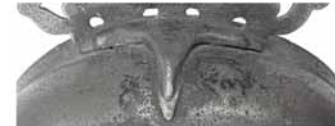
Triangle



Triangle & wedge



Linguiform



T-shaped

EARS



Open 3-lobed



Open 5-lobed



Twin horseshoe



Dolphin



Old English



Peacock's tail



Coronet



Flower



Geometric crescent



Geometric cross & crescent



Geometric cartouche



Geometric fretwork

POST-1650 ENGLISH PORRINGERS

BOWLS				
Side of bowl	Date range	No.	%	
Straight, without flange	pre-1650 - 1715	54	27%	29%
Straight, with flange		4	2%	
Bellied	1680 - 1815	138		69%
Curved	pre-1650	1		2%
Ogee	late C17?	2		
Base of bowl				
Flat, without foot rim	pre-1650 - 1725	46	23%	34%
Flat, with foot rim		22	11%	
Bossed	pre-1650 - 1815	123		62%
Domed, without foot rim	pre-1725	7		4%
Domed, with foot rim		1		

BRACKETS				
Category	Date range	Provenance	No.	%
Wedge	? – 1690	London & elsewhere	23	17%
Triangle	1685 – 1790	country wide	74	53%
Triangle & wedge	1690 – 1815	London & elsewhere	16	11%
Linguiform	1685 – 1710 1780 - 1815	London; geo. cartouche ears only Bristol; flower ears only	8	6%
T-shaped		London; geo. cartouche ears only	3	2%
Unclassified			5	4%
No bracket	? - 1930	London & bleeding bowls	10	7%

EARS				
Category	Date range	Provenance	No.	%
Open 3-lobed	1635 - 1700	London – and elsewhere?	13	6%
Open 5-lobed	1645 - 1700	London – and elsewhere?	7	3%
Twin horseshoe	1665 - 1690	London, Winchester	4	2%
Dolphin	1670 - 1750	London (mainly)	13	6%
Old English	1680 - 1740	widespread	59	28%
Peacock's tail	1685 - 1720	uncertain	19	9%
<i>Geometrics (all)</i>			52	24%
. crescent	1700 - 1755	London	15	7%
. cross & crescent	1690 - 1815	widespread	20	9%
. cartouche	1685 - 1760	London, Bristol	9	4%
. fretwork	1695 – 1735	London	8	4%
Coronet	1710 - 1790	Provincial, esp. Bristol from 1740	33	15%
Flower	1780 - 1815	Bristol	5	2%
Unclassified			8	4%

POSITION OF MARKS				
Position	Date range	Provenance	No.	%
Under bowl	1650 - 1725	widespread except Bristol	35	21%
In bowl	1680 - 1800	widespread	26	16%
Back of ear	1680 - 1800	widespread	64	38%
Front of ear	1650 - 1815	widespread except London	33	20%
Hms in bowl	1690 - 1800	London, Bristol	8	5%